

keep your
fire
for life



BARBAS

Universal-6

keep your fire - for life

UNIVERSAL-6

Setting the standard for insert wood fires

Some products are and remain classics. They stand the test of time and will always retain their value due to their design or function. The Barbas Universal is such a product, a true, traditional classic wood inset fire. The Universal has undergone revolutionary modernisation, in terms of both technology and design.

Barbas presents to you the Universal-6!

Existing situations

The Universal-6 is a wood fire with a swing door, and its original dimensions make it perfect for use in existing situations.

Optional convection ventilator

The unique aspect of the Universal-6 is the integrated convection ventilator at the back of the fire (optional), the ventilator accelerates the distribution of the convection heat. The position of the ventilator is new. It is now located at the back of the fire. This has created space for a deepened combustion base, giving you extra heating comfort which is another advantage. This makes it possible to choose from four different design frames.

Four different finishing styles

Never before has it been possible to create the Universal so completely according to your personal taste. The modernized frame versions create a completely unique style.

Modernised combustion technology

Barbas naturally devotes a great deal of care to the combustion technology in accordance with the latest laws and regulations. Moreover, with the Universal-6 it is possible to draw combustion air from outside. This enables you to heat your room independently. Ideal for houses that have increasingly effective insulation.

Keep your fire for life!

UNIVERSAL-6 70



frameless



classic frame

UNIVERSAL-6 70



insert frame



built-in frame

UNIVERSAL-6 80



frameless



classic frame

UNIVERSAL-6 80



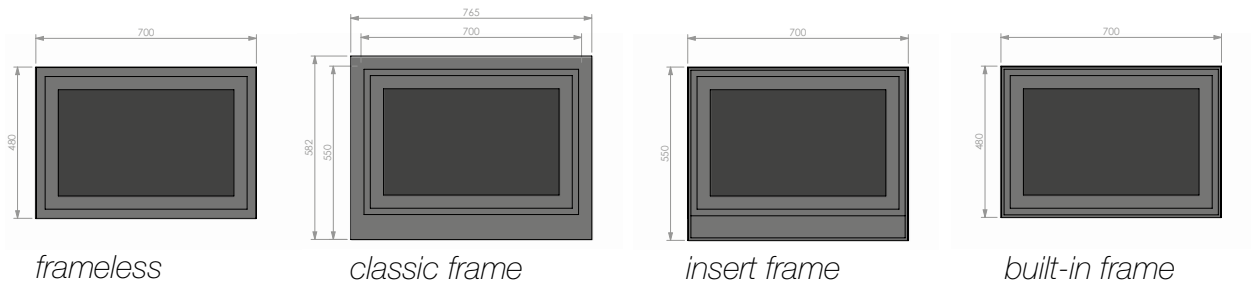
insert frame



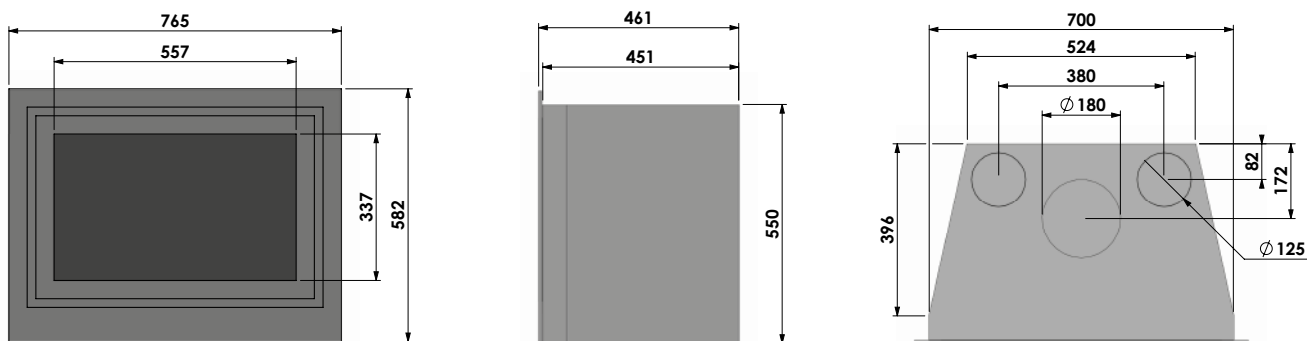
built-in frame

THE DIMENSIONS

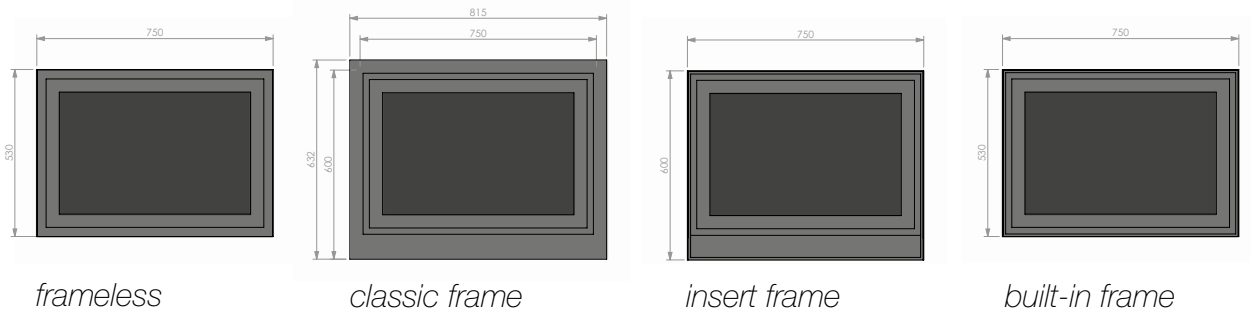
UNIVERSAL-6 70 VISUALS OVERVIEW OF THE FOUR FINISHING STYLES



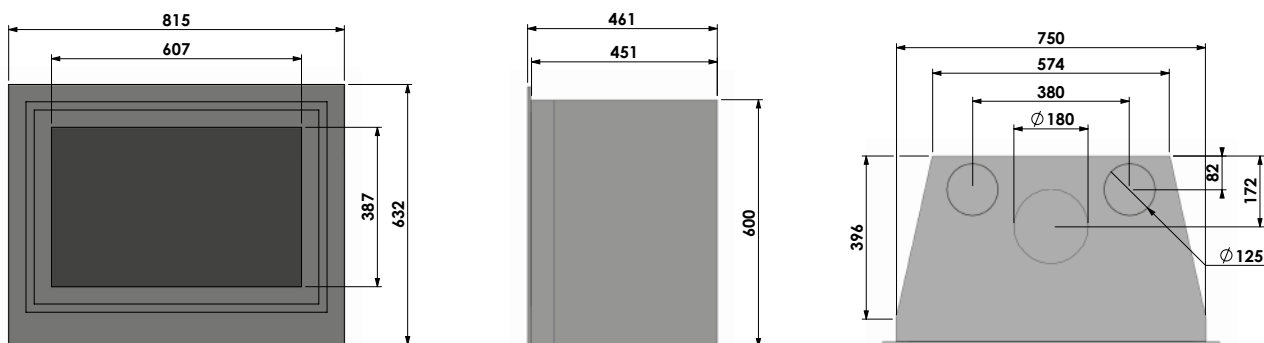
UNIVERSAL-6 70 DRAWING CLASSIC FRAME



UNIVERSAL-6 80 VISUALS OVERVIEW OF THE FOUR FINISHING STYLES



UNIVERSAL-6 80 DRAWING CLASSIC FRAME



OUTPUT AND STANDARD

	Output kW	Standard CE-EN 13229	Flamme Verte	1.BImSchV	VKF-LREV11	Smoke Control Areas	CO (vol%)	Fine particles (mg/m ³)	Efficiency (%)	System efficiency, aprox** (%)
Universal-6 70	7-10	●	★★★★★★	●	●*	●*	0,09	36	77	84
Universal-6 80	8-11	●	★★★★★★	●	●*	●*	0,06	27	76	83

*To be applied **Calculated for average room

CERTIFICATION EXPLAINED

CE - Compulsory European standard for all wood-burning appliances.

FLAMME VERTE - Voluntary French standard in which the emission and yield of the appliance determine how many stars are awarded (1 star is the lowest performance, 7 stars the best performance).

1.BIMSCHV - Compulsory German standard for wood-burning appliances. Appliances that are sold in Germany must meet this standard.

VKF-LRV11 - Compulsory Swiss standard for wood-burning appliances. Appliances that are sold in Switzerland must meet this standard.

SMOKE CONTROL AREAS - Required approval in Great Britain as suitable for burning wood in a designated smoke control zone. These zones have intensified requirements for the emission of fine particles.



FREEDOM IN FRAMES

Four different finishing styles

Never before has it been possible to create the Universal so completely according to your personal taste. The modernized frame versions create a completely unique style.

Frameless

In this version, the surround of the fire can be built in according to your wishes, making it invisible. This gives you maximum freedom in terms of the selection of the surround.



Classic frame

This frame makes it possible to create a simple and neat placement of the fire in an existing situation.



Insert frame

This latest trend transforms the hearth and surround into a single unit. With this frame the edging around the hearth are part of the fire. This gives the composition a contemporary look in accordance with the latest fashion trends.



Built-in frame

The 8 mm front side creates a minimalist look. The technology under the fire is not built in here.



CROSS SECTION

360 degree Universal-6



front



rear



left



right



top



bottom

AN ANALYSIS OF THE TECHNOLOGY

The handle

The completely redesigned handle has been fully concealed between the door and the frame. The key supplied, hooks onto the handle so that the door can be easily opened.



The closure

The newly designed closure with grip movement locks the door. This is extremely important, because together with the seal this ensures perfect closure of the door with regard to the appliance. This means that the appliance doesn't draw false air, and the combustion technique continues to be perfectly regulated so preventing blackened glass panes. Of course the cord and the closure can be easily replaced.



The hinge

The 8 mm thick hinge is adjustable, so that the door and casing fit perfectly together. This prevents the door from sagging.



Combustion air supply



bottom air duct



combustion air rear connection

Of course, with the Barbas a lot of attention has been paid to the combustion technique, in compliance with current legislation and regulations. For instance, with the Universal-6, combustion air can be drawn from the outside. This makes it possible to heat spaces independently of each other, making it ideal for the better insulated houses.

Open combustion

(air from the living room)

1. The combustion air is drawn into the combustion chamber via the **front** of the fireplace. This means that no structural modification is needed to the surround.

Closed combustion

(air from outside)

2. Via the base of the fireplace. A flexible pipe can be directly connected to the **bottom** of the appliance. This means that the appliance operates on outside air, without unwanted extra installation depth at the rear.
3. Via the rear of the fireplace. By turning the air duct round, the air supply can even be connected via the rear. A special kit mounted on the **rear** of the appliance makes this possible.

Air slider

Ease of use is paramount. The entire combustion technique is easy to operate via the proven air slider.

In the far right position, the appliance gets maximum air supply for combustion. Glass pane aeration to keep the glass clean, secondary air for post-combustion and primary air for easy start-up of the fire. Once the combustion process has started, the slider is positioned to half way.

This shuts off the primary air from the bottom of the combustion chamber, and the secondary air and glass pane aeration provide maximum efficiency. This can all be operated by a simple slider.



Primary air supply

The Universal-6 has a full steel burning floor for a long lifetime. The primary combustion air is supplied to the combustion chamber via the 8 mm thick grate. The design of the burning floor keeps all glowing particles and ash deposits in the centre of the fireplace. This means that there is always a good layer of burning embers in the fireplace for a balanced combustion process.



steel burning floor and grate

Secondary combustion and glass pane aeration

The distribution of the combustion air is done with a completely renewed system. The combustion air is distributed under the burning floor.

Unique with the Universal-6: the combustion air is distributed via the left and right hand sides of the appliance using air ducts. This makes a sunken burning floor possible, without making concessions to the combustion technique. A built-in guide system carries the air to the secondary air duct. This has been fully integrated into the concrete ceramic interior. All other air is led to the front, and flows past the glass pane into the combustion chamber, preventing blackening of the pane.



welded ducts



inlet

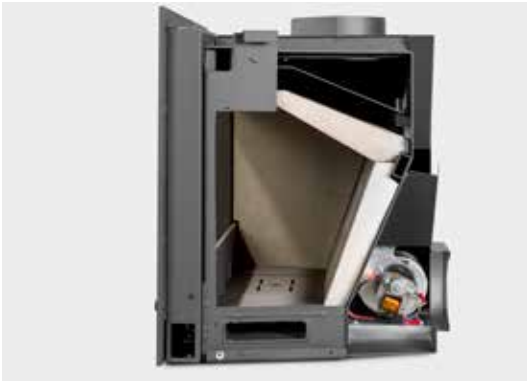


entrance



air duct

Sunken burning floor



sunken burning floor

The adapted combustion technique via the left and right hand side of the fireplace and also moving the optional convection fan to the rear of the appliance, mean that the Universal-6 has a 9 cm deep burning floor. The combustion chamber gets narrower towards the burning floor, so that all wooden parts are included in the combustion process. The sunken burning floor creates a combustion chamber which is wide and deep enough for logs of up to 40 cm. The burning floor itself consists of 8 mm thick steel with a grate for the primary combustion air supply.

Convection fan



A unique characteristic of the Universal-6 is the integrated convection fan at the rear of the appliance (optional). The fan provides faster distribution of the convection heat.

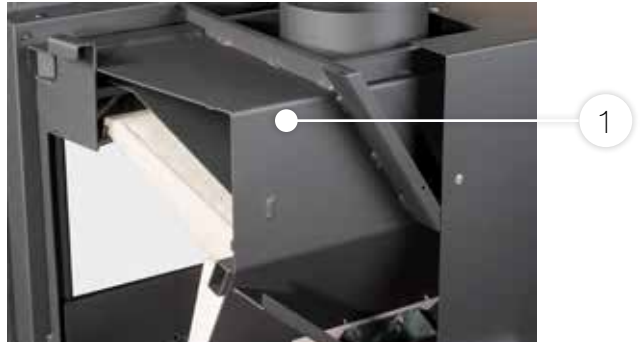
The position of the fan is new, it is situated at the rear of the appliance. This means space has been made for a sunken burning floor, giving you a better stoking experience. This also makes it possible to choose from four different design frames.

Maintenance of the convection fan can be done from the inside of the appliance. To prevent overheating of the fan, the heat-sensitive switch ensures that at a temperature of about 50 degrees Centigrade the fan starts turning fully automatically. The fan's speed has variable regulation using the built-in dimmer supplied.

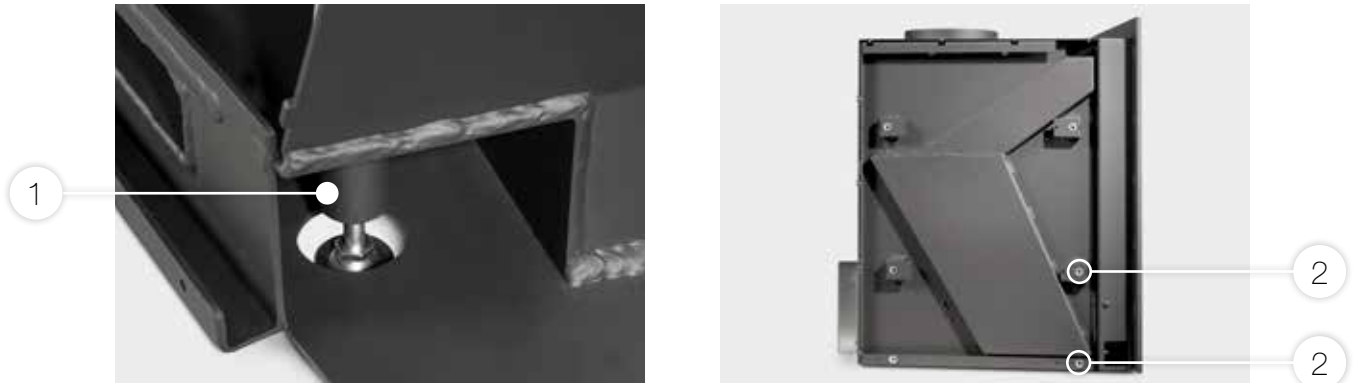
A special seal between the combustion chamber and the fan provides extra protection.

Convection heat

1. All heat which would be lost in the surround is collected in the standard convection casing supplied. The heat is returned to the living room via a conducting system in the casing.
2. If the Universal-6 is fitted in an existing situation, then all convection heat is blown into the living room from the front of the fireplace, just above the glass pane.
3. The optional convection set, consisting of a set of ducting and grills is connected to the top of the appliance, so that the convection heat is blown into the living room via the mantelpiece.
4. The convection vents at the top of the glass pane can then be closed. This provides an even distribution of the heat, so that all convection heat is blown into the living room via the convection set.



Adjustable feet



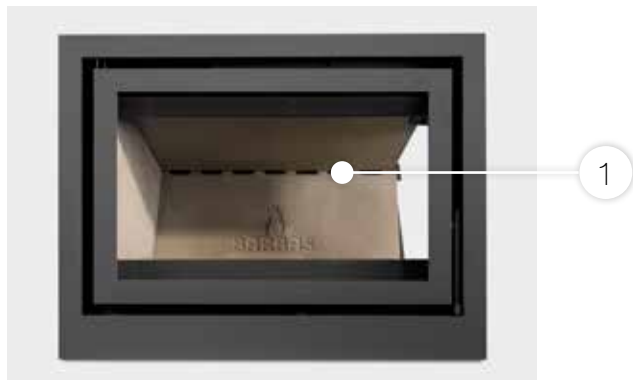
The Universal-6 has standard adjustable feet (1) especially for situations where this wood burner is installed in an existing situation. This makes it possible to level the appliance perfectly from the inside.

If the Universal-6 is used in a newly created situation, than there is the option of setting up the appliance exactly at the required height. This is possible thanks to the optional extended adjustable feet set, which is fixed to the left and right hand side of the fireplace. Attachment points have been specially made in the fireplace structure for this purpose (2).

Concrete ceramic

The concrete ceramic interior consists of an interior lining, designed in-house for the Barbas wood burners. This reinforced concrete ceramic contributes to better combustion due to its accumulative function. This makes the wood gases burn less quickly, resulting in peaceful and uniform combustion.

The design of the Universal-6 takes account of the Concrete Ceramic interior applied. For instance, the panels are up to 5.5 cm thick, and the secondary air duct (1) is integrated in the rear wall. Not only sustainable, but also very stylish.



Double brake plate



To achieve maximum efficiency, the double brake plate prevents all heat from disappearing straight through the chimney.

The bottom brake plate is made of concrete ceramic, with a Stainless Steel brake plate on top. The positioning of the narrow passages for the flue gases from the combustion chamber to the chimney flue gives optimum efficiency and admission of the flue gases.

A properly functioning chimney flue is of course extremely important. This is after all the motor behind the entire system. That is why the flue can be connected from the inside of the fireplace to the standard gas flue outlet. A seal between the gas flue outlet and the combustion chamber ensures that the flue gases do not enter the living room via the convection air.



keep your fire - for life



interfocos



More information:

Interfocos BV

Hallenstraat 17
5531 AB Bladel
The Netherlands

T + 31 (0)497 339 200
F + 31 (0)497 339 210

info@barbas.nl
www.barbas.nl

Interfocos UK

P.O. BOX 6940
Kidderminster
DY11 9EW
United Kingdom

T + 44 (0)1562 515715
F + 44 (0)1562 827826

info@barbas.com
www.barbas.co.uk

Interfocos France

63 avenue de Versailles
75016 Paris
France

T + 33 (0)385 390 446
F + 33 (0)385 393 734

info@barbas.com
www.barbas.com