

AT THE END *of the day*<sup>®</sup>



*Coast Spas*<sup>®</sup>



## AT COAST SPAS...

---

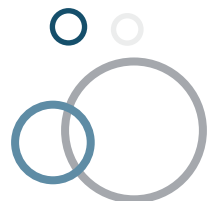
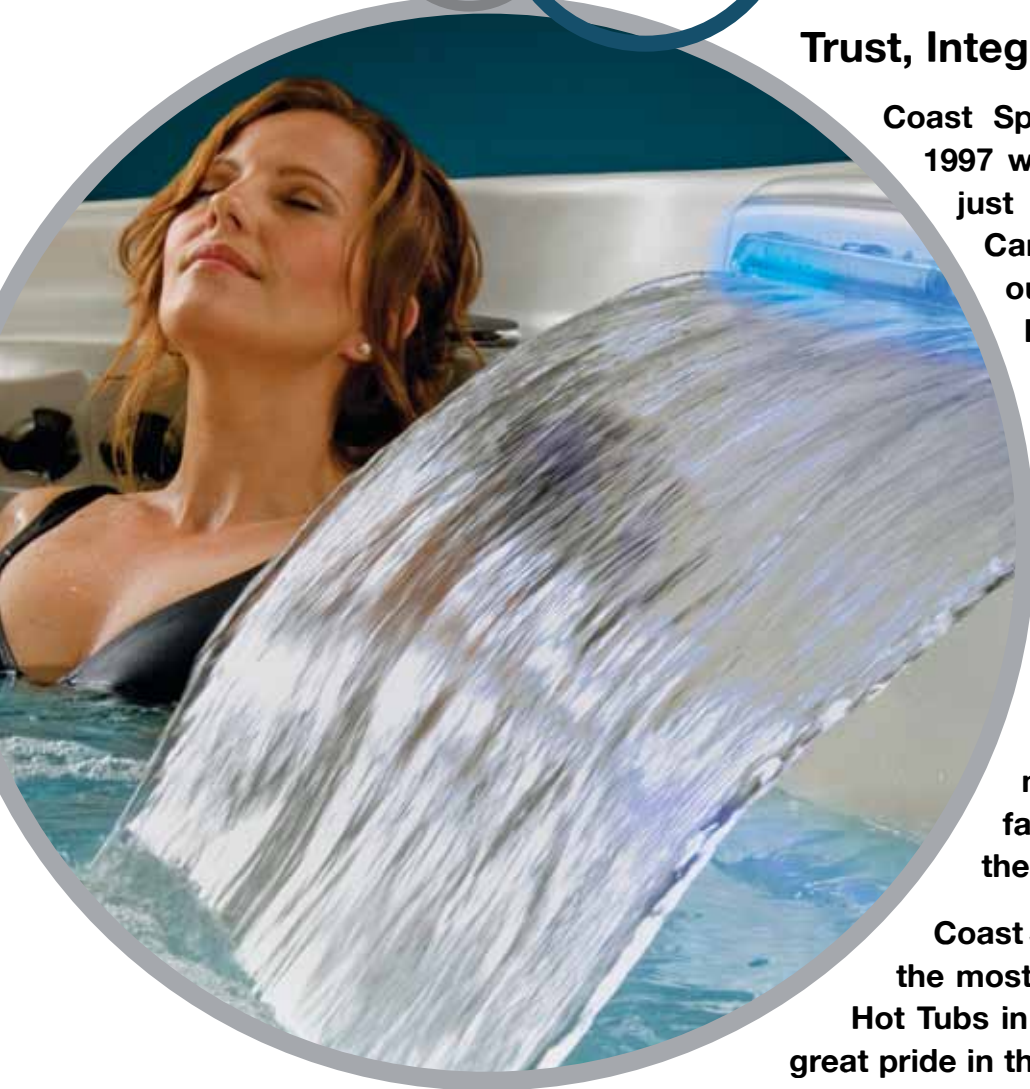
### Trust, Integrity and Peace of Mind...

Coast Spas Manufacturing Inc. was founded in 1997 with our Head Office and Factory located just outside Vancouver, British Columbia, Canada. Every Coast Spa is hand-made in our Factory to strict ISO 9001-2008 Quality Managed Standards. “Quality always takes Precedence over Quantity” at Coast Spas.

At Coast Spas we understand that your choices are vast in today’s market and a purchase of a new Hot Tub is a decision that you will enjoy for many years. If one was to ask; “What are the most important reasons to choose a Coast Spas Hot Tub”? Coast Spas puts Quality and Safety first in everything we do. We manufacture every spa at our corporate factory headquarters. Rest assured that there is no “outsourcing” at Coast Spas.

Coast Spas prides itself in that we are considered the most prestigious, refined and the most stylish Hot Tubs in the Industry. Our skilled employees take great pride in the craftsmanship of each and every Coast Spa and are committed to providing only the highest quality product.

Step into a Coast Spa and you will feel the difference.



# COAST SPAS COMMITMENT TO QUALITY

Coast Spas' quality is the driving force behind all of our hot tubs. We are committed to providing our customers with delivery of defect-free hot tubs. We are further committed to a company wide program for continuous improvement targeted to perfection. Quality shall, in every case, take precedence over quantity.



## QUALITY COMES IN MANY FORMS

### VACUUM FORMING

We form every hot tub shell using a state of the art PLC programmable computer controlled double-sided vacuum former that produces a part that is seamless, strong, durable and free from blemishes.

### STEEL REINFORCEMENT

1 ¼-inch Steel Angle iron is added into every hot tub shell for extra strength and durability.

### BARCOL TESTING

We Barcol test every hot tub shell to ensure that the hardness of the fiberglass is greater than 25 Barcols before we will continue manufacturing in the production line.

### JET INSTALLATION

All jets are installed by hand and inspected twice before water testing. Markings are added to the jet bodies to ensure the nuts have not shifted.

### IN-LINE QUALITY INSPECTIONS

All hot tubs are quality inspected at each stage during the manufacturing process then water tested to ensure all prior steps were properly completed.

### WATER TESTING

Every hot tub is thoroughly water-tested and goes through an 89 point inspection before it leaves the Coast Spas factory.

### WATER EVACUATION

To prevent any water from freezing, we force out residual water in pipes after testing by injecting compressed air through the pipes. All Coast Spas come standard with a self winterizing feature.

### DETAILING

Each hot tub is detailed by hand and then given a careful 74 point inspection before wrapping to ensure top quality hot tubs are being shipped to our customers.



Coast Spas... Where Stress Is Water Soluble®



# REMARKABLE RECOGNITION



The founders of Coast Spas shared a vision to become a manufacturer of hot tubs whose quality would be recognized all over the world.

Today that vision is a reality – Coast Spas leads the industry in innovation, design and quality and has a global network of over 200 Dealers.



Over the years Coast Spas has been recognized for numerous milestones and achievements. In fact, we have been named one of Canada's 50 Best Managed Companies since the year 2000. Coast Spas was honoured with the prestigious Canada's 50 Best Managed Platinum Club – one of the countries most elite business designations.



The Cascade Spa Series is the world's first patented "Vanishing" edge portable spa. Coast Spas' Cascade Spa Series is the winning edge in hot tub design and creates a joyous union of water and sky.



We were the first and one of very few hot tub manufacturers around the world to receive the prestigious ISO 9001:2008 Quality Management System certification recognizing the most stringent quality assurance requirements.



We are a proud sponsor of the Arthritis Research Centre of Canada.



NSPI International Design Award – Portable Hot Tubs Category.



International Awards of Excellence APSP – Exterior/Interior Portable Hot Tub.



The Australian Electrical Safety Certificate and the C-Tick compliance label indicate that the product complies with the applicable Electromagnetic Compatibility (EMC) standard. Both establish a traceable link between the equipment and the manufacturer, importer or their agent responsible for compliance and for placing it in the Australian market.



The CE mark is a mandatory European marking for certain product groups to indicate conformity with essential health and safety requirements set out in European Directives.



ETL Semko is a global leader in the testing, inspection and certification of products for manufacturers and retailers around the world.



TÜV Product Service Ltd. provides compliance services that facilitate fast access to more markets, improve efficiency and reduce costs for a wide range of industry sectors.



For over 100 years, Underwriters Laboratories has been a trusted global source for product compliance benefiting manufacturers, retailers, consumers and regulating boards.



A respected worldwide certification standard for products and services.



Coast Spas is proud to be a Platinum member of Canada's 50 Best Managed Companies.

IEC 60335.2.60 – International Electrotechnical Commission, Household and similar electrical appliances - Safety - Particular requirements for whirlpool baths and whirlpool spas.

AS/NZS 60335.2.60 – Australian and New Zealand, Household and similar electrical appliances - Safety - Particular requirements for whirlpool baths and whirlpool spas

# COAST SPAS MODELS



## OMEGA

250 US gal (684 L) • 66 x 83.5 x 38 in.  
(151.1 x 212.1 x 77.5 cm) • 500 lbs / 294 kgs



## KAUAI

280 US gal (1064 L) • 72.5 x 81 x 30 in.  
(184.2 x 205.7 x 76.2 cm) • 725 lbs / 328.8 kgs



## QWEST

275 US gal (1041 L) • 82.1 x 77.3 x 38 in.  
(208.6 x 196.3 x 96.5 cm) • 925 lbs / 415.9 kgs



## VANTAGE

330 US gal (1249 L) • 81.5 x 81.5 x 40 in.  
(207 x 207 x 101.6 cm) • 915 lbs / 415.9 kgs



## ZENITH

390 US gal (1098 L) • 81.5 x 81.5 x 40 in.  
(207 x 207 x 101.6 cm) • 935 lbs / 424 kgs



## HELIOS

384 US gal (1454 L) • 92 x 92 x 40 in.  
(233.7 x 233.7 x 101.6 cm) • 1425 lbs / 646.3 kgs



## FREEDOM

440 US gal (1665 L) • 92 x 92 x 40 in.  
(233.7 x 233.7 x 101.6 cm) • 1290 lbs / 585 kgs



## UNITY

310 US gal (1173 L) • 92 x 92 x 40 in.  
(233.7 x 233.7 x 101.6 cm) • 990 lbs / 449 kgs



## MIRAGE

680 US gal (2574 L) • 132 x 92 x 40 in.  
(335.3 x 238.8 x 101.6 cm) • 1650 lbs / 748.3 kgs



## VANTAGE CURVE

330 US gal (1098 L) 81.5 x 81.5 x 47 in.  
(207 x 207 x 119.3 cm)  
45.875 in. at back (116.5 cm) • 915 lbs / 415.9 kgs



## ZENITH CURVE

390 US gal (1098 L) 81.5 x 81.5 x 47 in.  
(207 x 207 x 119.3 cm)  
45.875 in. at back (116.5 cm) • 935 lbs / 424 kgs



## JOURNEY

384 US gal (1455 L) • 84 x 92 x 40.25 in.  
(213.4 x 233.7 x 102.2 cm)  
47 in. at back (119.4 cm) • 913 lbs / 415 kgs



## RADIANCE

425 US gal (1612 L)  
92.31 x 91.94 x 40.25 in.  
(234.5 x 233.5 x 102.2 cm) 47 in. at back  
(119.4 cm) • 1309 lbs / 593.7 kgs



## RADIANCE LOUNGER

390 US gal (1476 L) • 92.31 x 91.94 x 40.25 in.  
(234.5 x 233.5 x 102.2 cm)  
47 in. at back (119.4 cm) • 1309 lbs / 593.7 kgs



## CASCADE I

450 US gal (1710 L) • 94.5 x 96.5 x 40 in.  
(240 X 245 X 101.6 cm) • 1135 lbs / 514.7 kgs



## CASCADE II

480 US gal (1818 L) • 92 x 101 x 31 in.  
(233.7 x 256.6 x 78.8 cm)  
47 in. at back (119.4cm) • 1475 lbs / 670.4 kgs



## CASCADE III

480 US gal (1818 L) • 94 x 94 x 47 in.  
(238.8 X 238.8 X 119.4 cm) • 1030 lbs / 468 kgs



## BAHAMA SOUNDWAVES™

470 US gal (1786 L) • 91 x 91.5 x 40 in.  
(231.2 x 231.1 x 101.6 cm) • 1425 lbs / 646.3 kgs



## LANAI SOUNDWAVES™

410 US gal (1558 L) • 90 x 90.5 x 40 in.  
(228.6 x 229.9 x 101.6 cm) • 1320 lbs / 598.6 kgs

# A HOT TUB FOR EVERY LIFESTYLE



## EXTREME TV SPA

480 US gal (1824 L) • 95 x 95 x 40 in.  
(241.3 x 241.3 x 101.6 cm) • 1465 lbs /  
664.4 kgs



## MIRAGE TV SPA

680 US gal (2574 L) • 132 x 92 x 40 in.  
(335.3 x 238.8 x 101.6 cm) • 1650 lbs /  
748.3 kgs



## WELLNESS™ I

592 US gal (2241 L) • 96 x 96 x 45 in.  
(243.8 x 243.8 x 114.3 cm) • 1325 lbs / 600.9  
kgs



## WELLNESS™ II

1667 US gal (6312 L)  
90 x 151 x 53 in.  
(228.6 x 383.5 x 134.6 cm) •  
2100 lbs / 952.4 kgs



## WELLNESS™ II LOUNGER

1580 US gal (5981 L)  
90 x 151 x 53 in. (228.6 x 383.5 x 134.6 cm) •  
2100 lbs / 952.4 kgs



## WELLNESS™ III

**NOT SOLD SEPARATELY**  
170 US gal (644 L) • 83 x 83 x 48.5 in.  
(211 x 211 x 123.2 cm) • 679 lbs /  
307.9 kgs

## SHELL FINISHES



BLACK OPAL™



OCEAN WAVE  
OPAL



OYSTER OPAL



STERLING  
MARBLE



KALAHARI



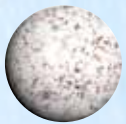
GRAPHITE



CINNABAR



WHITE PEARL



SAHARA



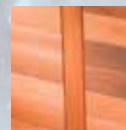
QUARTZ



GYPSUM

\* Colors of swatches  
are approximate.

## CABINET FINISHES



REDWOOD  
CEDAR



GREYWASH  
CEDAR



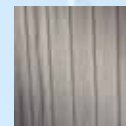
BLACK CEDAR



UNSTAINED  
CEDAR



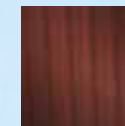
CLEAR SATIN  
CEDAR



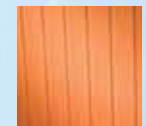
COAST GUARD™  
GREYWASH



COAST GUARD™  
BLACK



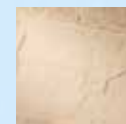
COAST GUARD™  
CHESTNUT



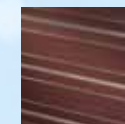
COAST GUARD™  
REDWOOD



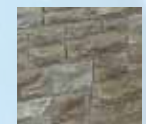
MOUNTAIN  
GREY SLATE



DESERT SAND  
SLATE



COAST GUARD™  
CHESTNUT W/  
STAINLESS



RIVERSTONE

## THE HEART & SOUL OF YOUR SPA

We consider the shell to be the most important part of a spa - the heart and soul of your spa. We focus intently on this important component during the manufacturing process.



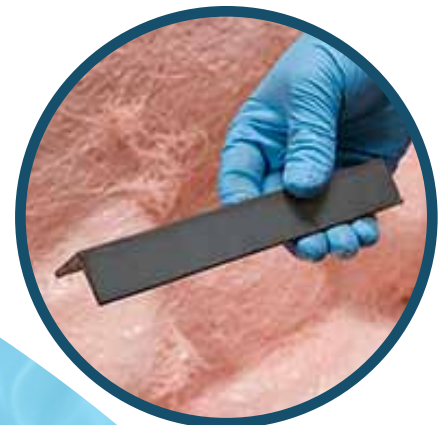
Coast Spas' unique hot tub shells are comprised of the finest Acrylic, vinyl ester skin coat and multiple layers of hand rolled fiberglass. In fact, we use only the highest quality fiberglass in the industry, Owens Corning™. The fiberglass is formulated with special resins that we hand roll 8 to 14 layers (dependent on particular model series) onto the acrylic.

To provide even more superior reinforcement strength, we use 1 1/4-inch Steel Angle iron strategically encapsulated in high pressure areas, making Coast Spas the strongest built spa shell in the industry. We stand behind our product proudly by providing a lifetime structural warranty on your spa shell.

With the very best components in your spa investment, you will have peace of mind that it is Built to Last® for a lifetime.



Built with the strength  
of the Pink Panther



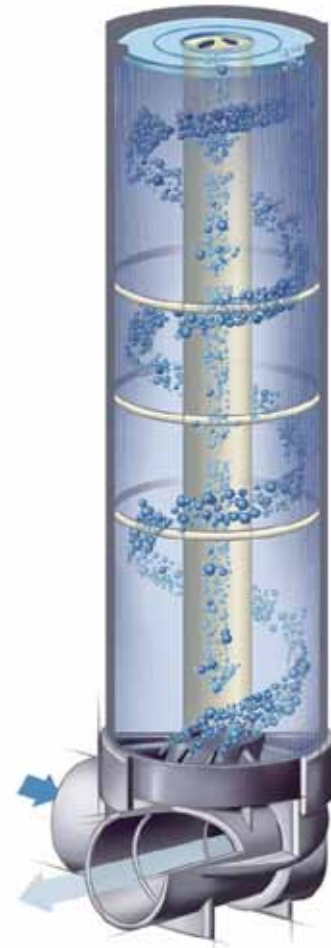
The Pink Panther is a ™ and © of United Artist Pictures Inc.  
Licensed by MGM Consumer Products.



# COAST SPAS EXCLUSIVE CYCLONIC FILTRATION SYSTEM®

Soak in pristine clean water with Coast Spas' exclusive **Cyclonic Filtration System**® designed to follow "Worldwide Regulatory Health Guidelines". The filtration occurs outside the bather environment and includes up to a 175 square foot cartridge with a Microban bacteria inhibitor and water diversion blades that provide 100% filtration for your spa.

These blades direct the water like a cyclone through the entire length of the filter. The convenient top-loading canister design is housed on the outside of the hot tub for easy access to capture and trap oils, dead skin cells, and ultra fine particles to further prevent any risk of contaminating your hot tub water which may cause cloudy, dirty water. Your choice is crystal clear with the purchase of a Coast Spa.



# 21ST CENTURY TECHNOLOGY - THE DRIVING FORCE OF YOUR COAST SPA

## CUTTING EDGE TOP SIDE CONTROLS

We have transformed the control of hot tubs with the most advanced spa control system in the industry. Coast Spas continues its tradition of producing innovative hot tub products that enhance your spa experience with True Carbon Fiber Top Side Controls. We source our advanced control systems from the most reputable suppliers in the industry. Coast Spas controls have unmatched performance in reliability, visibility, and flexibility.

Designed to provide hours of trouble free usage, our controls provide easy and clear instruction for controlling everything from water and air pressure to temperature control and jet selection, with just the touch of a button. For easy use and durability, our topside controls are encased in a liquid crystal display with a large digital readout. The patented Piezo switch technology is resistant to moisture and does not rely on the overlay itself for protection against moisture. A thin, hard plastic barrier protects the top of the controls and the inside electrical components. To prevent accidental temperature settings, there are two separate buttons to increase and decrease heat settings.



## PREMIUM LUXURY CARBON FIBER TOP SIDE CONTROLS

- Exclusive Style and Design
- Easy to Read Invertible LED Display
- Multi-Color Display
- User Friendly Interface
- Multiple Language Settings
- Programmable Filter Cycles
- Audio/Video Controls
- Text Message Repair Depot
- Hot Tub Maintenance Reminders
- Optional Remote Control

## CARBON FIBER TOP SIDE CONTROLS

- Sleek Style and Design
- Large, Easy to Read LCD Display
- User Friendly Touch Control
- Button Control
- Dual Layer Waterproof Construction
- Programmable Filter Cycles
- Audio/Video Controls
- Optional Remote Control

*Coast Spas... World's Best Built Spas®*



COAST CASCADE III "THE PHANTOM" SHOWN

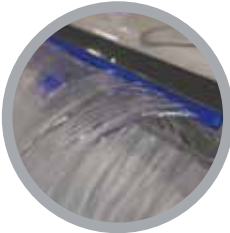
# EXCEPTIONAL COAST SPAS FEATURES

## LIGHTING PACKAGES



Unwind in the soothing waters of your hot tub and enjoy a spectrum of mood enhancing light. Add sensation with 20 or 50 super bright LED's. LED features include: lit controls, jets and waterfalls, and speakers. Add our optional exterior Holographic cabinet lighting package for a sensational lighting experience.

## WATER FEATURES

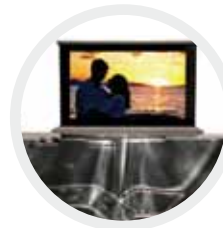


All of our spas have water features. Relax and rejuvenate with Coast Spas' exclusive 24" waterfall in select models or try the world's first patented "Negative" edge portable spa and experience the joyous union of water and sky.



## ENTERTAINMENT

Entertain your friends and family in the comfort of your backyard. Nobody does Entertainment Spas like Coast Spas. We lead the industry in Audio and Video Entertainment by providing you with a wide variety of Audio/Video systems; including an MP3 docking station, waterproof stereo, CD player and pop-up surround sound speakers. Add a TV and DVD player to any hot tub for the ultimate spa experience!



## EQUIPMENT PACKS

Our equipment packs are designed to be flexible, highly reliable, and feature rich. They are made using the finest corrosion and chemical resistant high-tech materials in the industry. Our heater elements are chemical resistant, and feature low watt-density coiled elements. This provides quick and efficient heating. Our direct flow plumbing increases water pressure and also ensures less wear on the element, providing a longer lifespan.





### CABINETS

Coast Spas' custom hot tub cabinets are handcrafted by our team resulting in the finished look of fine furniture and outstanding quality. We offer AAA grade clear Canadian Red Cedar, maintenance free synthetic wood, and our attractive, exclusive "slate and river rock" finishes that provide you the widest selection of handcrafted cabinets in the hot tub industry.

### INSULATION - YOUR SPA YOUR WAY

At Coast Spas YOU have the option to choose Partial, Thermopane or Full Foam with engineered equipment enclosures.

### PUMPS/MOTORS

Whether you are looking for total relaxation or the most powerful massage available, Coast Spas has it all. Our wide selection of motor sizes are the absolute best in the industry. We rate our motors on true horse Power provided from the motor manufacturers, including the exclusive 20 amp, 7 HP Monster Flow motor for North America. Don't settle for anything but the truth when selecting which motor suits your requirements.

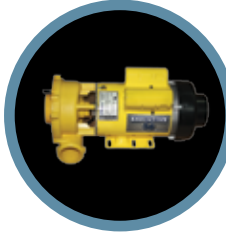
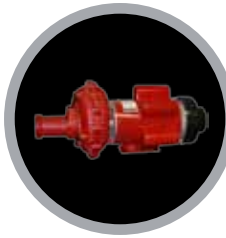
Coast Spas cares about the environment. As part of our commitment to energy savings, look for our exclusive 1.7 AMP low amperage filtration speed on our motors.

### PLUMBING PEACE OF MIND

For optimal performance and reliability, we use a three phase plumbing process with primer, glue and high pressure clamps on each and every fitting. This process guarantees the most secure leak-free plumbing in the industry.

### WATER PURIFICATION

Whether you choose Eco-Pure Ozonator or Eco-Clean Salt Water and UV purification, Coast Spas offers the finest in water purification. In addition, our standard, self-cleaning hot tub sweeper jet ensures the cleanest hot tub in the industry.



# COAST SPAS CARES ABOUT THE ENVIRONMENT

**Coast Spas prides itself on being diligent about using environmentally responsible manufacturing processes and products. We work in partnership with suppliers to reduce our carbon footprint. We believe that one simple act multiplied many times can make all the difference to the world.**

## LOW AMPERAGE MOTORS

Coast Spas offers low amperage motors to consume as few as 1.0 amps of power on heating and filtering cycles.

## ENERGY EFFICIENT FILTRATION

Coast Spas' Cyclonic Filtration® System provides the most effective filtration in today's hot tub industry, resulting in a shorter duration of running time and less power consumption.

## PROGRAMMABLE CONTROL

Advanced electronic controls offer customizable filtration and heating cycles to suit individual hot tub routines.

## FULL FOAM INSULATION

All Coast Spas are available with full foam insulation to maximize heat retention and minimize energy usage.

## WE'VE GOT YOU COVERED

Our hot tub covers are custom designed for each hot tub model to provide a perfect fit and reduce heat and moisture loss. Energy saving baffles at the center seam seal your cover to keep the heat in.

## BOOST YOUR MOOD - NOT YOUR ENERGY BILL

Soothe your senses with Energy Efficient LED lighting. Coast Spas produces the brightest and most relaxing LED mood lighting in the industry while keeping your energy consumption low.

## SAVING FORESTS ONE SPA AT A TIME

Our cedar cabinets are manufactured from wood that has been devastated by Pine Beetle infested forests, reducing global deforestation of healthy trees.

## WATER BASED STAIN

Coast Spas uses only environmentally friendly water based stains that do not contain VOCs (Volatile Organic compounds) which give off minimal odors and reduces environmentally harmful gases.

## WE'RE SAVING WATER

Filtration — by providing a filtration system unmatched by any other hot tub company in efficiency, we extend the duration of time between water changes.

## WATER PURIFICATION

Coast Spas' exclusive water purification systems lower contaminants and total dissolved solids in your hot tub to maximize the life of your water.



**AT THE END of the day<sup>®</sup>**  
*Coast Spas Cares*

## REDUCE, REUSE, RECYCLE...

See why our spas will  
make you feel good.

- We reuse and filter the water that is used to test our spas during production
- We sort waste, wood and cardboard which then goes to a processing facility to be recycled
- We recycle pumps and metal products
- We consider the environment by using recycled stock for marketing materials

## REDUCING OUR CARBON FOOTPRINT

### INTEGRATED INBOUND SHIPMENTS

Raw material shipments are joined together at a central distribution location to reduce our carbon footprint.

### WATER CONSERVATION

Water waste is minimized by continuously reusing sanitized and clean water used in our hot tub testing facility.

### CONSOLIDATED SHIPPING

Dealer shipments going to the same geographical area are combined to conserve natural resources and reduce fuel consumption.

### WASTE

We sort all material waste consistently for recycling.

Coast Spas are Built to Last.® The result is the reduction of the use of raw materials and less frequent shipping of products. Operating hours in the manufacturing facility are consequently reduced, therefore lessening the impact on the environment.

### LEAN AND GREEN

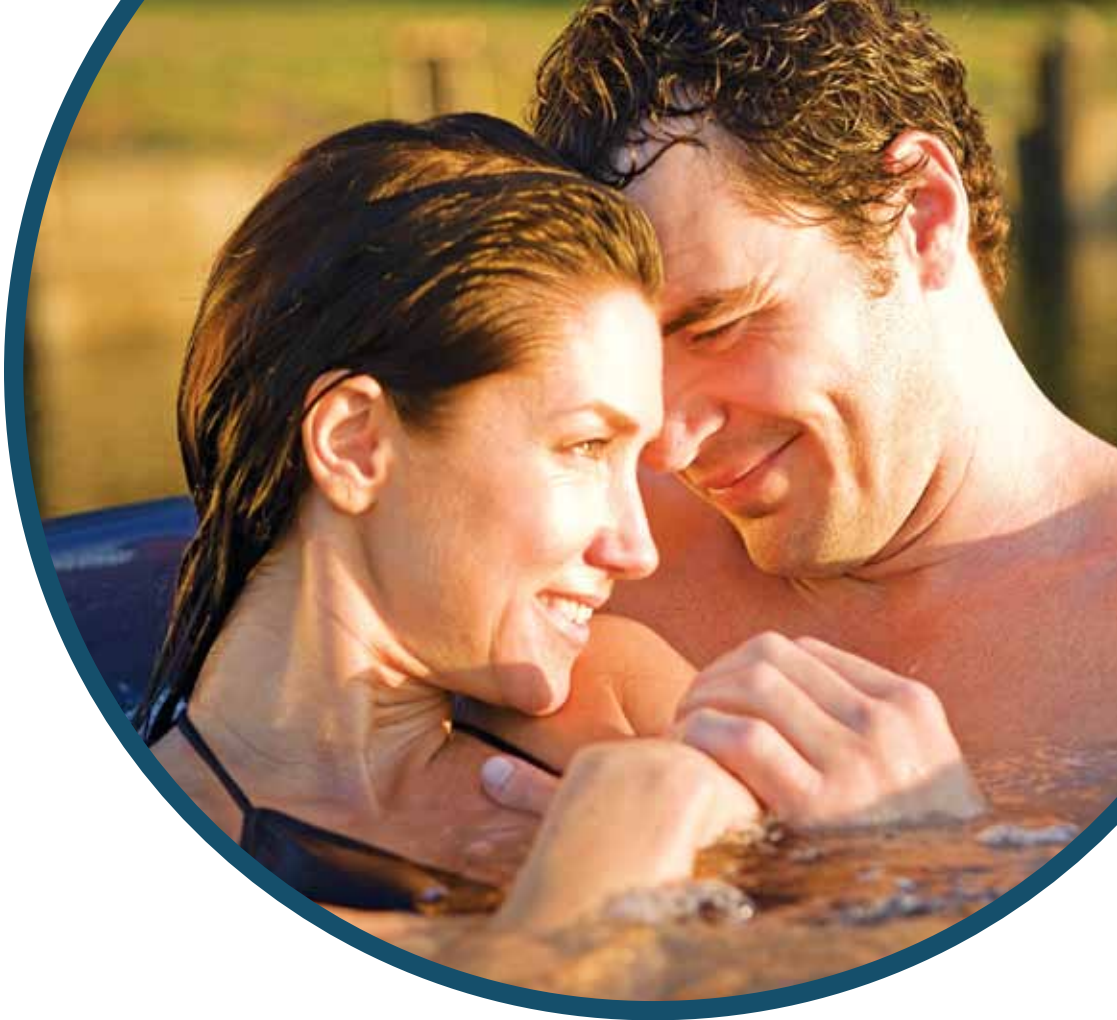
We have proudly implemented the Kaizen, Kanban, 5S. Just-In-Time and lean manufacturing programs throughout our factory.



As long as people and their lifestyles continue to evolve, so will the Coast Spas commitment to providing customers with outstanding quality, design and innovation.

Whether for therapy, relaxation or family fun, at the end of the day...

Coast Spas has the perfect hot tub for you.



AT THE END *of the day*®



COAST SPAS MANUFACTURING INC.,  
6315 - 202 Street, Langley, BC V2Y 1N1 info@coastspas.com • www.coastspas.com

UL1563



TÜV



AUTHORIZED COAST SPAS DEALER

©Coast Spas Manufacturing Inc. All rights reserved. Coast Spas World's Best Built Spas®, Built to Last®, Where Stress is Water Soluble®, Water Diversion Blade®, THE END of the day®, The Coast Guard Bottom®, Crystal Clear Purification Chamber®, Cyclonic Filtration System®, Extreme®, Wellness Spa®, The BOSS®, Northwind Hot Tubs® and Northwind® are the registered trademarks of Coast Spas Manufacturing Inc. All other brands, product names, company names, trademarks, trade names and service marks used are the property of their respective owners. Due to our continuous improvement programs, Coast Spas may make product modifications and enhancements. Specifications may change without notice. International products may be configured differently to meet local electrical requirements. Dimensions are approximate. Product pictured may include options beyond standard equipment. Check with your local dealer for the most current product specifications.

Coast Spas® 2011 All rights reserved