

2015

HEAT, LIFE AND ATMOSPHERE

A real fire is a beautiful and romantic source of heat which creates a warm, cosy atmosphere. There is nothing quite like settling down and watching the flames flickering in the stove as a comfortable warmth spreads throughout the room. A real wood burning stove is an integral part of a home, and provides a wonderful focal point for the entire family during the colder months of the year.



THE ART OF DANISH ENGINEERING



ATTENTION TO **DETAIL**

When the weather outside begins to chill, a stove naturally becomes the heart of the home. A centre focal point for all the family, it is essential to choose a brand you can trust. Westfire stands for high quality craftsmanship and impeccable attention to detail; leaving you safe in the knowledge that your stove will last for many years, performing to the highest levels of efficiency and environmental standards. When correctly used with well managed wood, your stove will be CO2-neutral making it a responsible option for a renewable energy source. For a functional and highly efficient stove with a focus on design, Westfire is the perfect choice.



WESTFIRE.UNIQ.28 / BLACK WITH SOAPSTONE



WESTFIRE.UNIQ.32 / INSERT, FRAMELESS



CAREFULLY DESIGNED FOR WARMTH

Westfire designs stoves with great care and attention to detail. A wood burning stove must complement the home in which it is installed since it will outlast both the furniture and the décor. Westfire has therefore developed a future-proof design characterised by simplicity, timelessness and contemporary technology.

Using a wood burning stove to heat your home is a natural process which does not contribute to the greenhouse effect. Westfire's stoves make effective use of thermal energy and are very environmentally friendly.

A stove brings the family closer – all members, young and old, can work together to split logs, bring in firewood and feed the fire. And the whole family can enjoy the great indoor climate and the natural heat produced by a wood burning stove.



WESTFIRE.UNIQ.33 / BLACK



NEW



WESTFIRE UNIO.33 / SIDE GLASS / BLACK





WESTFIRE.UNIQ.34 / SIDE GLASS / BLACK



NEW





WESTFIRE. UNIQ.26 / BLACK





WESTFIRE.UNIQ.33 / BLACK





WESTFIRE.UNIQ.28 / BLACK WITH SOAPSTONE





WESTFIRE.UNIQ.34 / BLACK



QUALITY STOVES IN LINE WITH THE LATEST TECHNOLOGY

Westfire has developed a complete range of wood burning stoves, flue pipes, chimneys and accessories recognisable by their clean lines. All Westfire's products are manufactured in accordance with the finest traditions of craftsmanship. The stoves incorporate the latest combustion technology, which ensures economical and clean combustion. Westfire's stoves are available with top or back flue outlets, making them suitable for new and older buildings alike.





WESTFIRE.UNIQ.27 / BLACK





WESTFIRE.UNIQ.28 / BLACK



WESTFIRE.UNIQ.27 / BLACK





WESTFIRE.UNIQ.26 / BLACK WITH SOAPSTONE



WESTFIRE.UNIQ.27 / BLACK WITH SOAPSTONE





 WESTFIRE.UNIQ.15 / BLACK WITH DOOR 



 WESTFIRE.UNIQ.16 / GREY WITH DOOR 



 WESTFIRE.UNIQ.16 / GREY WITH DOOR AND SOAPSTONE 



WESTFIRE.UNIQ.15 / BLACK





WESTFIRE.UNIQ.21 / BLACK



BEAUTIFUL SOLUTIONS THAT **WORK**

Westfire is a tried-and-tested concept, with attention paid to every detail. We have many years' experience in the development of exciting and functional solutions for the home. We offer both hearth plates and chimneys to complement our range of stunning wood burning stoves, making it easy to create a stylish and exclusive look in your home.



WESTFIRE.UNIQ.21 / BLACK WITH PEDESTAL



NEW



WESTFIRE.UNIQ.35 / INSERT



NEW



WESTFIRE.UNIQ.35 / BLACK WITH PEDESTAL



NEW



WESTFIRE.UNIQ.35 / ON 50 MM BLOCK







 WESTFIRE.UNIQ.32 / INSERT / NF / FULL GLASS FRONT 



WESTFIRE.UNIQ.32 / INSERT / WIDE FRAME





WESTFIRE.UNIQ.32 / INSERT, NARROW FRAME



STUNNING **DESIGN** AND A COMFORTABLE CLIMATE

Westfire manufactures a range of highly functional wood burning stoves that meet the most stringent requirements for environmentally friendly combustion. Convection stoves heat the air and spread it evenly throughout the room. At Westfire, you can choose the stove that best matches your requirements. Whatever your choice of Westfire stove, you are guaranteed an efficient and economical source of heat.





WESTFIRE.UNIQ.32 / INSERT, FRAMELESS





WESTFIRE.UNIQ.32 / BLACK WITH PEDESTAL





WESTFIRE.UNIQ.23 / SIDE GLASS / PEDESTAL 2






WESTFIRE.UNIQ.23 / SIDE GLASS / PEDESTAL 3





 WESTFIRE.UNIQ.23 / ON STAND / 50 MM BLOCK





WESTFIRE.UNIQ.21 / BLACK WALL-MOUNTED



WESTFIRE.UNIQ.23 / ON 100 MM BLOCK



UNIQ 23 FEATURES

- Large glass area
- Clean burn technology
- Primary, secondary and tertiary air
- Closed combustion air supply
- Efficient convection stove
- Three leg heights 50 mm, 100 mm or 300 mm
- Ash pan



WESTFIRE.UNIQ.23 / ON 100 MM LEGS





WESTFIRE.UNIQ.23 / ON 100 MM LEGS





WESTFIRE.UNIQ.23 / INSERT





WESTFIRE.ONE / PEDESTAL





WESTFIRE.ONE / BLACK





WESTFIRE.TWO / BLACK





WESTFIRE.TWO / PEDESTAL





NEW



WESTFIRE.UNIQ.17 / BLACK



NEW



WESTFIRE.UNIQ.18 / BLACK





 WESTFIRE.UNIQ.5A / BLACK WITH SOAPSTONE

ECONOMIC ADVANTAGES

Using wood to heat your home can yield huge savings, and it is often possible to recoup the investment in a new wood burning stove over a very short period of time. It is important to choose the right size of stove, and to position it correctly within the house, in order to obtain the greatest possible benefit from the heat which is emitted. Westfire has developed many different types of wood burning stoves, all available in different sizes with a range of options. Which, of course, means that you will get the most advantageous solution, whatever your requirements.



 WESTFIRE.UNIQ.19 / BLACK 



WESTFIRE.UNIQ.5A / BLACK

WESTFIRE HEARTH PLATES

	STANDARD PLATE SMALL	STANDARD PLATE MEDIUM	STANDARD PLATE BIG	TEARDROP SHAPED PLATE	TEARDROP SHAPED PLATE	TRUNCATED PLATE	SQUARE PLATE	RECTANGULAR PLATE
WF STEEL PLATES 2 mm			 Product no. 5015	 Product no. 5011				
WF SLATE PLATES 20 mm		 Product no. 5007 (G)	 Product no. 5005 (G)	 Product no. 5001 (G)				
WF GLASS PLATES 12 mm Hardened glass		 Product no. p19	 Product no. p6		 Product no. p15	 Product no. p14	 Product no. p13	 Product no. p18
WF GLASS PLATES 6 mm Hardened glass	 Product no. p16		 Product no. p6	 Product no. p11	 Product no. p15	 Product no. p14	 Product no. p13	

(G) = Available in grey

WESTFIRE FLUE PIPE SETS

All flue pipes from Westfire are made of 2 mm high-grade steel and are available with a black or grey lacquered finish.
All flue pipe sets are supplied with a short wall sleeve and one rosette (decorative ring). Internal pipe diameter: 150 mm.

	PRODUCT NUMBER	DESCRIPTION	STANDARD DIMENSIONS
	9005 (G)	Flue pipe set 2 x 45°	700 x 500 mm
	9101 (G)	Flue pipe set 90°	700 x 500 mm
	9103 (G)	90° soft bend flue pipe	700 x 500 mm

(G) = Grey



WESTFIRE DIGITAL MOISTURE METER



WESTFIRE FLUE PIPES

No.	Product no.	Description	Standard dimensions
1	9002 (G)	Flue pipe, 45° elbow	26 x 31 cm
3	9003 (G)	Flue pipe, 45° elbow, short	14 x 14 cm
	9015 (G)	Flue pipe extension	15 cm
4	9025 (G)	Flue pipe extension	25 cm
5	9033 (G)	Flue pipe extension	33 cm
6	9050 (G)	Flue pipe extension	50 cm
7	9100 (G)	Flue pipe extension	100 cm
8	9110	Wall sleeve, short	10 cm
9	9111	Wall sleeve, long	29 cm
10	9113 (G)	Rosette	-
11	9114	Flue damper	-
12	9100	Connector piece	-
13	0090 (G)	0-90° swivel elbow	-
	9113(G)	Rosette 45 gr.	-
	9100	Flue pipe extension w/door	100 cm
	9050	Flue pipe extension/adjustable	50 cm
	91005(G)	Starter pipe	100 cm
	9010 (G)	Starter pipe	10 cm

(G) = Grey

WESTFIRE CHIMNEYS

- | No. | Description |
|-----|--|
| 1 | Starter pipe, uninsulated |
| 2 | Chimney section, insulated, with connector |
| 3 | Roof flashing |
| 4 | Ceiling collar |
| 5 | Chimney cowl (mounted on chimney section) |
| 6 | Connector |



Westfire's sectional chimneys are CE approved (minimum distance to combustible materials 25 mm).

TECHNICAL DATA



	TESTED OUTPUT	HEIGHT/WIDTH/DEPTH	WEIGHT	RECOMMENDED AREA	LOADING DOOR (LOG LENGTH)	HEIGHT TO CENTRE OF REAR OUTLET	DISTANCE FROM REAR TO CENTRE OF TOP OUTLET	TESTING CE SINTEF EN DEFRA	DISTANCE COMBUS-TIBLE REAR*	DISTANCE COMBU-STIBLE SIDES*	HEIGHT TO CENTER OF CLOSED CUMBUS-TION INTAKE
WESTFIRE.UNIQ.5	4,7 kW	80 cm/50 cm/38.5 cm	76 kg	30-100 m ²	37 cm	-	13,5 cm	● ●	17,5 cm	25 cm	
WESTFIRE.UNIQ.15	5 kW	107 cm/44 cm/43 cm	110 kg	30-100 m ²	30 cm	96 cm	15,5 cm	● ● ● ●	15 cm	35 cm	11 cm
WESTFIRE.UNIQ.16	5 kW	112 cm/44 cm/44 cm	116 kg	30-100 m ²	30 cm	96 cm	18 cm	● ● ● ●	15 cm	35 cm	11 cm
WESTFIRE.UNIQ.17	5 kW	75 cm/50 cm/37 cm	84 kg	30-100 m ²	32 cm	60,5 cm	13,5 cm	● ● ● ●	17,5 cm	35 cm	6 cm
WESTFIRE.UNIQ.18	5 kW	95 cm/50 cm/37 cm	92 kg	30-100 m ²	32 cm	80,5 cm	13,5 cm	● ● ● ●	17,5 cm	35 cm	21 cm
WESTFIRE.UNIQ.19	5 kW	95 cm/50 cm/37 cm	100 kg	30-100 m ²	30 cm	80,5 cm	13,5 cm	● ● ● ●	17,5 cm	35 cm	20,5 cm
WESTFIRE.UNIQ.21	5 kW	80 cm/44 cm/43 cm	81 kg	30-100 m ²	30 cm	67,5 cm	15,5 cm	● ● ● ●	17,5 cm	30 cm	8,5 cm
WESTFIRE.UNIQ.21 WALL-MOUNTED	5 kW	73 cm/44 cm/43 cm	81 kg	30-100 m ²	30 cm	>68 cm	15,5 cm	● ● ● ●	17,5 cm	30 cm	<7,5 cm
WESTFIRE.UNIQ.21 WITH PEDESTAL	5 kW	114 cm/44 cm/43 cm	91 kg	30-100 m ²	30 cm	101 cm	15,5 cm	● ● ● ●	17,5 cm	30 cm	48 cm
WESTFIRE.UNIQ.23 ON 300 MM LEGS	6,1 kW	85 cm/55 cm/38 cm	92 kg	40-110 m ²	40 cm	74,5 cm	13,5 cm	● ● ● ●	20 cm	35 cm/45 cm	37 cm
WESTFIRE.UNIQ.23 ON 100 MM LEGS	6,1 kW	65 cm/55 cm/38 cm	92 kg	40-110 m ²	40 cm	54,5 cm	13,5 cm	● ● ● ●	20 cm	35 cm/45 cm	17 cm
WESTFIRE.UNIQ.23 ON 50 MM LEGS	6,1 kW	60 cm/55 cm/38 cm	92 kg	40-110 m ²	40 cm	49,5 cm	13,5 cm	● ● ● ●	20 cm	35 cm/45 cm	12 cm
WESTFIRE.UNIQ.23 WITH PEDESTAL 2	6,1 kW	105 cm/55 cm/38 cm	112 kg	40-110 m ²	40 cm	94,5 cm	13,5 cm	● ● ● ●	20 cm	35 cm/45 cm	57 cm
WESTFIRE.UNIQ.23 WITH PEDESTAL 3	6,1 kW	85 cm/55 cm/38 cm	112 kg	40-110 m ²	40 cm	74,5 cm	13,5 cm	● ● ● ●	20 cm	45 cm	57 cm (37 cm)
WESTFIRE.UNIQ.23 INSERT	6,1 kW	H. 66 cm/B. 67 cm Building in dimensions: H/B/D: 60 x 61 x 37,5 cm	92 kg	40-110 m ²	40 cm	47 cm	13,5 cm	● ● ● ●	20 cm	35 cm	10 cm
WESTFIRE.UNIQ.26	4,4 kW	100 cm/46,5 cm/43,5 cm	105 kg	30-100 m ²	30 cm	89,5 cm	15,6 cm	● ● ● ●	10 cm	30 cm	11 cm
WESTFIRE.UNIQ.27	4,4 kW	105 cm/47 cm/47 cm	110 kg	30-100 m ²	30 cm	89,5 cm	19,2 cm	● ● ● ●	10 cm	30 cm	11 cm
WESTFIRE.UNIQ.28	4,4 kW	135 cm/47 cm/47 cm	120 kg	30-100 m ²	30 cm	89,5 cm	19,2 cm	● ● ● ●	10 cm	30 cm	11 cm
WESTFIRE.UNIQ.32 INSERT (NARROW FRAME)	5,9 kW	H. 61 cm/B. 88 cm Building in dimensions: H/B/D: 55,5 x 81 x 44,5 cm	110 kg	50-150 m ²	65 cm	40,5 cm	15 cm	● ● ● ●	20 cm	15 cm	7 cm
WESTFIRE.UNIQ.32 INSERT (WIDE FRAME)	5,9 kW	H. 57 cm/B. 100 cm Building in dimensions: H/B/D: 55,5 x 81 x 40 cm	110 kg	50-150 m ²	65 cm	40,5 cm	15 cm	● ● ● ●	20 cm	15 cm	7 cm
WESTFIRE.UNIQ.32 INSERT (FRAMELESS)	5,9 kW	H. 55 cm/B. 81 cm Building in dimensions: H/B/D: 55 x 81 x 45 cm	110 kg	50-150 m ²	65 cm	40,5 cm	15 cm	● ● ● ●	20 cm	15 cm	7 cm
WESTFIRE.UNIQ.32 WITH PEDESTAL	5,9 kW	102 cm/100 cm/41 cm	135 kg	50-150 m ²	65 cm	85,5 cm	15 cm	● ● ● ●	20 cm	15 cm	52 cm
WESTFIRE.UNIQ.33	6,1 kW	105 cm/50 cm/44 cm	118 kg	50-150 m ²	33 cm	91 cm	13 cm	● ● ● ●	20 cm	35 cm	7 cm
WESTFIRE.UNIQ.33 SIDE GLASS	6,1 kW	105 cm/46 cm/44 cm	118 kg	50-150 m ²	33 cm	91 cm	13 cm	● ● ● ●	20 cm	45 cm	7 cm
WESTFIRE.UNIQ.34	6,1 kW	121 cm/50 cm/44 cm	124 kg	50-150 m ²	33 cm	106,5 cm	13 cm	● ● ● ●	20 cm	35 cm	8 cm
WESTFIRE.UNIQ.34 SIDE GLASS	6,1 kW	121 cm/46 cm/44 cm	124 kg	50-150 m ²	33 cm	106,5 cm	13 cm	● ● ● ●	20 cm	45 cm	8 cm
WESTFIRE.UNIQ.35 WITH PEDESTAL	4,3 kW	98,5 cm/39 cm/36 cm	114 kg	30-100 m ²	29 cm	-	11,5 cm	● ● ●	20 cm	20 cm	50,5 cm
WESTFIRE.UNIQ.35 50 MM BLOCK	4,3 kW	59,5 cm/39 cm/36 cm	95 kg	30-100 m ²	29 cm	-	11,5 cm	● ● ●	20 cm	20 cm	11 cm
WESTFIRE.UNIQ.35 INSERT, 4-SIDED WESTFIRE.UNIQ.35 INSERT, 3-SIDED	4,3 kW	H. 62,5 cm/B. 48 cm H. 59 cm/ B.48 cm Building in dimensions: H/B/D: 56 x 40 x 35 cm	75 kg	30-100 m ²	29 cm	-	11,5 cm	● ● ●	20 cm	20 cm	6,5 cm
WESTFIRE.ONE	4,9 kW	57 cm/41 cm/41 cm	80 kg	30-100 m ²	30 cm	45,5 cm	12 cm	● ● ●	45 cm	65 cm	17 cm
WESTFIRE.ONE WITH PEDESTAL	4,9 kW	85 cm/41 cm/41 cm	110 kg	30-100 m ²	30 cm	73,5 cm	12 cm	● ● ●	45 cm	65 cm	46 cm
WESTFIRE.TWO	7,1 kW	57 cm/56cm/41cm	100 kg	50-150 m ²	42 cm	45,5 cm	12 cm	● ● ●	45 cm	60 cm	17 cm
WESTFIRE.TWO WITH PEDESTAL	7,1 kW	85cm/56cm/41cm	135 kg	50-150 m ²	42 cm	73,5 cm	12 cm	● ● ●	45 cm	60 cm	46 cm

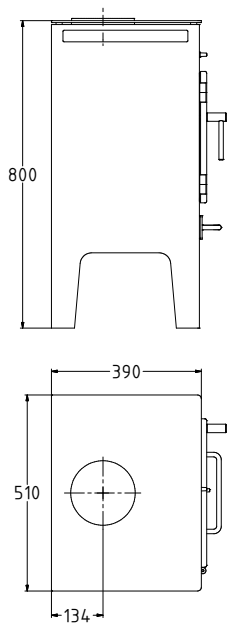
Flue outlet - top and rear are suitable for Westfire flue pipes with an external diameter of 154mm (internal diameter 150mm). Westfire Uniq 35 has flue diameter 125mm insternal.



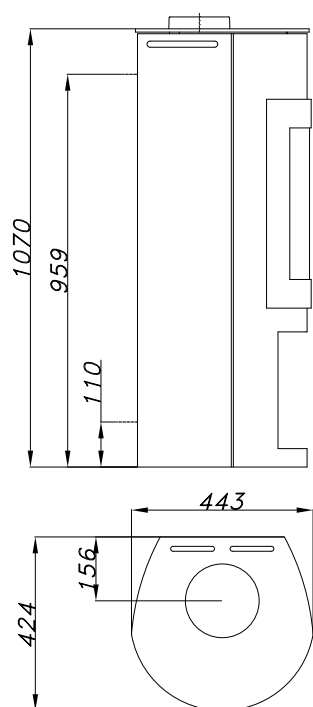
Westfire combustion chambers are very efficient and designed to burn cleanly. Stoves displaying the tick logo are approved for burning wood in a smoke control area, special note should be taken to the manufacturer's instructions on burning stoves in a smoke control zone. Wood burnt should be split and dry and have a moisture content of 15% or below and be free of chemical treatments. When purchasing a Westfire stove please request a DEFRA approved model to ensure you receive an approved stove.

MODELS

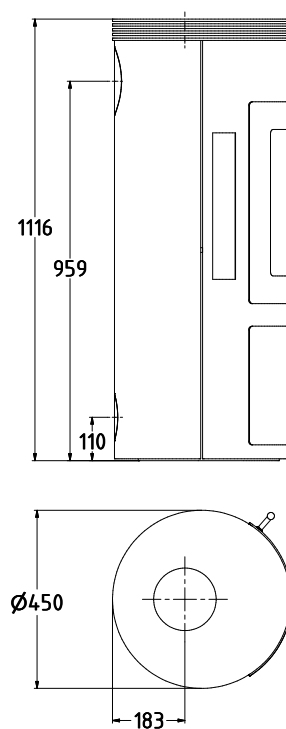
WESTFIRE.UNIQ.5



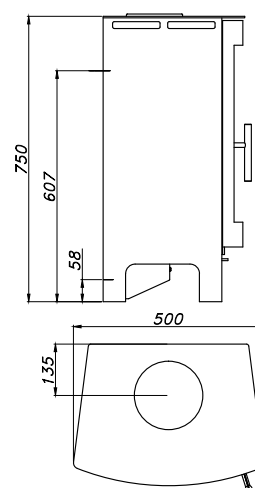
WESTFIRE.UNIQ.15



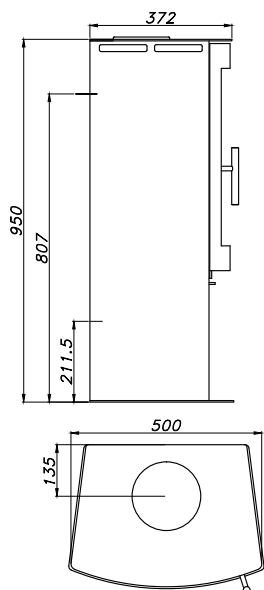
WESTFIRE.UNIQ.16



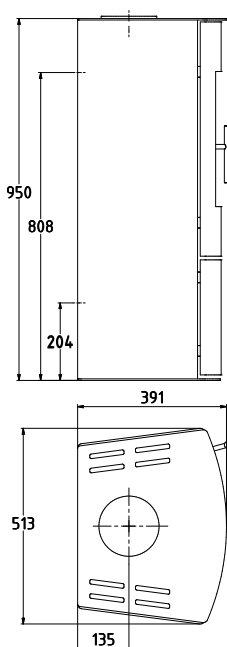
WESTFIRE.UNIQ.17



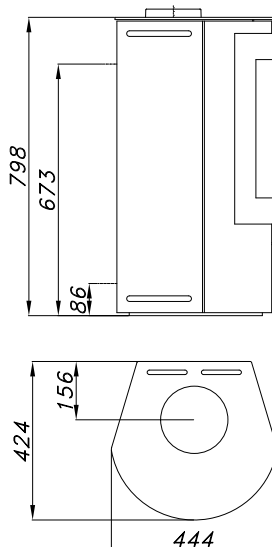
WESTFIRE.UNIQ.18



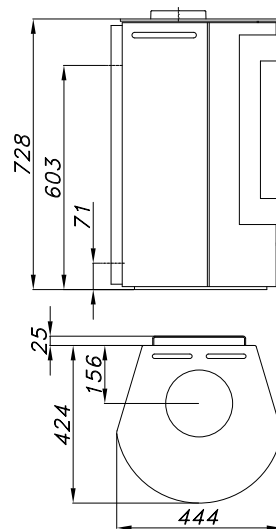
WESTFIRE.UNIQ.19



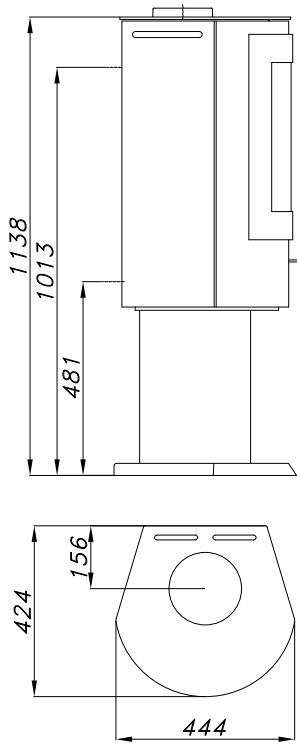
WESTFIRE.UNIQ.21



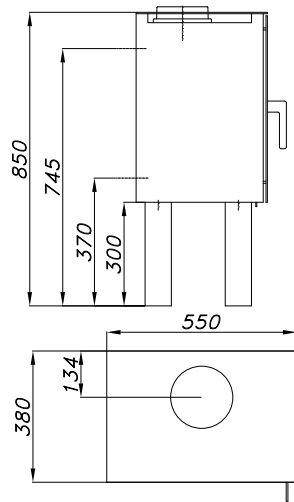
WESTFIRE.UNIQ.21 / WALL-MOUNTED



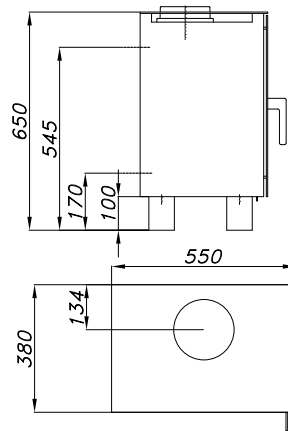
WESTFIRE.UNIQ.21 / PEDESTAL



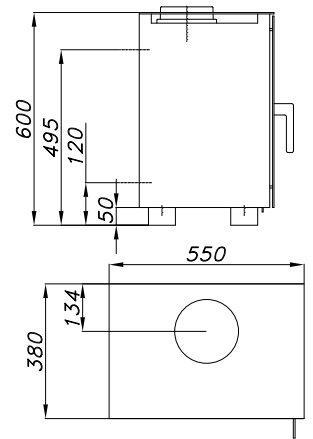
WESTFIRE.UNIQ.23 / ON LEGS 300 MM



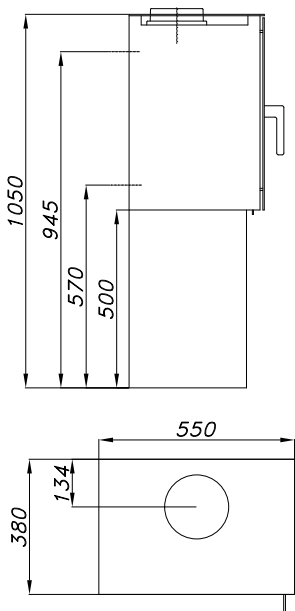
WESTFIRE.UNIQ.23 / ON LEGS 100 MM



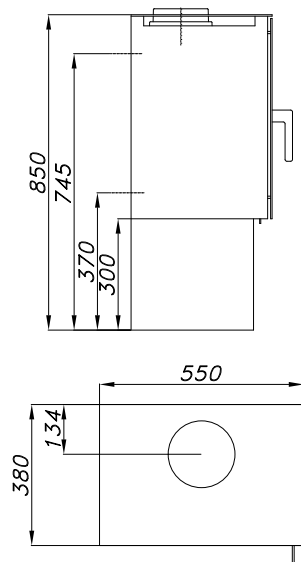
WESTFIRE.UNIQ.23 / ON LEGS 50 MM



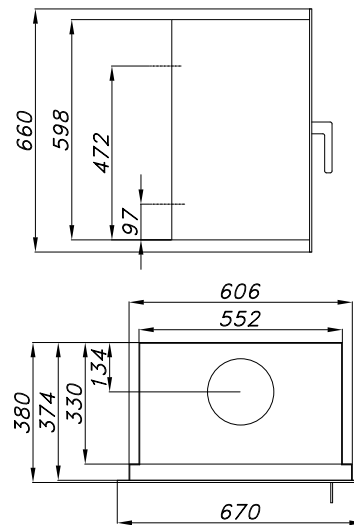
WESTFIRE.UNIQ.23 / PEDESTAL



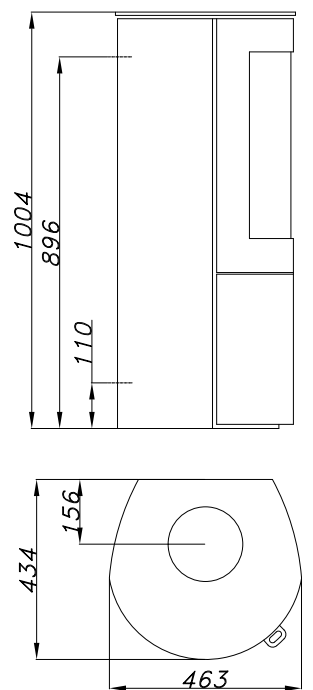
WESTFIRE.UNIQ.23 / PEDESTAL/ SIDEGLASS



WESTFIRE.UNIQ.23 INSERT

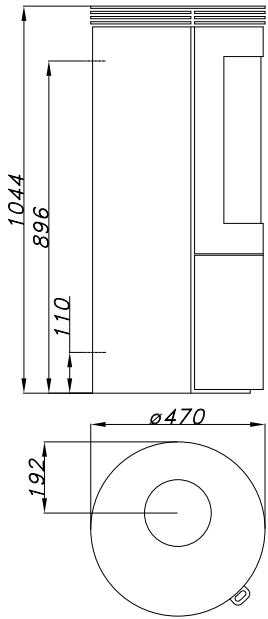


WESTFIRE.UNIQ.26

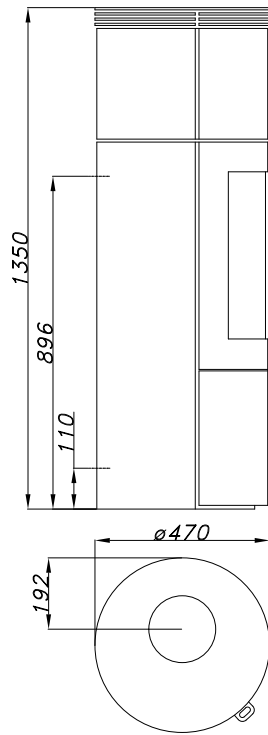


MODELS

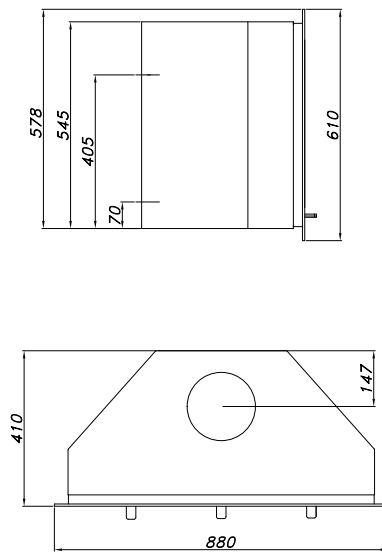
WESTFIRE.UNIQ.27



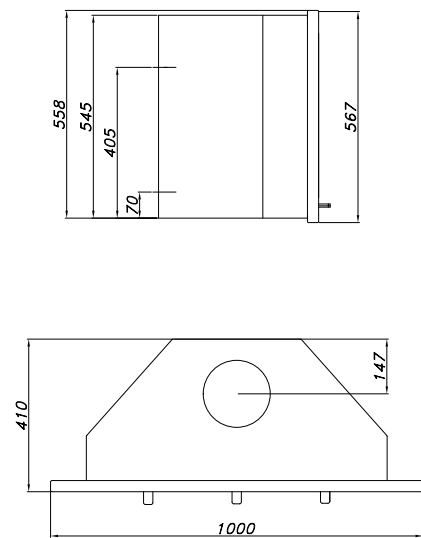
WESTFIRE.UNIQ.28



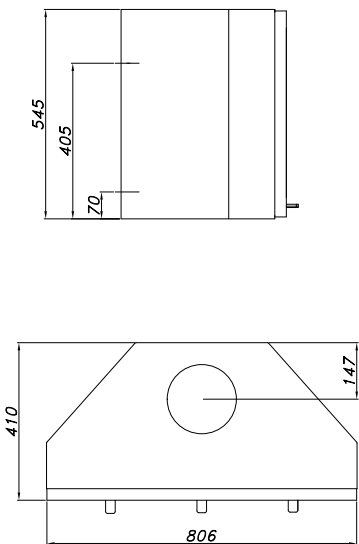
WESTFIRE.UNIQ.32 / INSERT
NARROW FRAME



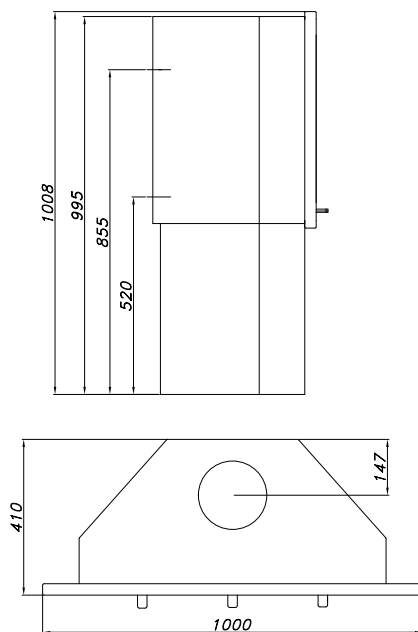
WESTFIRE.UNIQ.32 / INSERT
WIDE FRAME



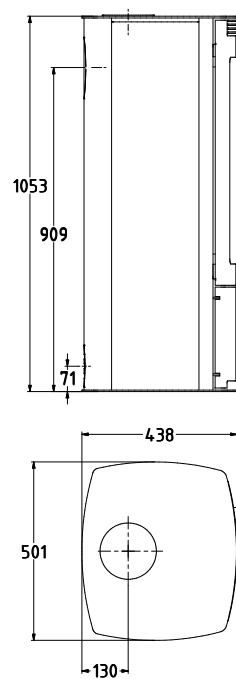
WESTFIRE.UNIQ.32 / INSERT
FRAMELESS



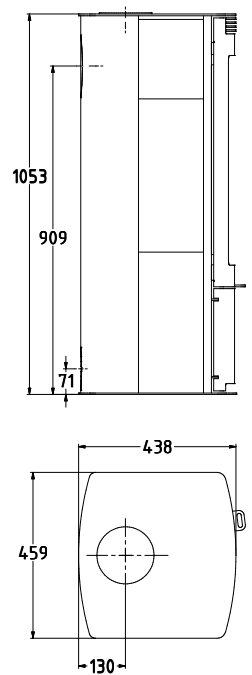
WESTFIRE.UNIQ.32 / PEDESTAL



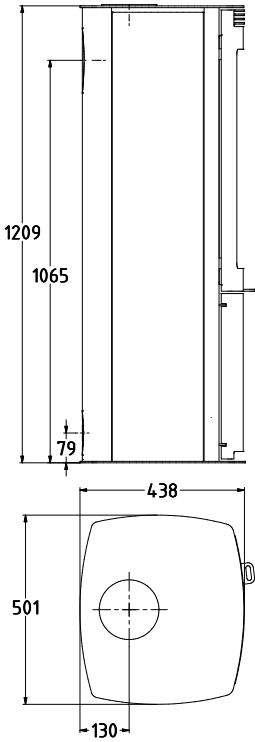
WESTFIRE.UNIQ.33



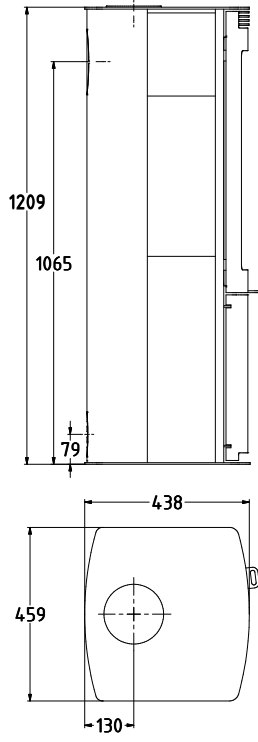
WESTFIRE.UNIQ.33 / SIDEGLOSS



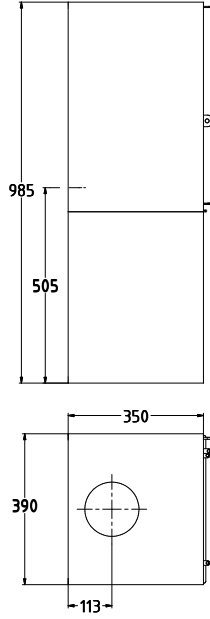
WESTFIRE.UNIQ.34



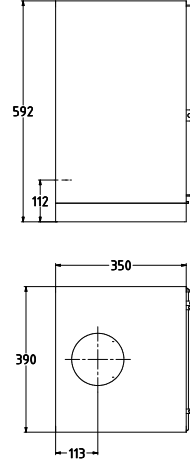
WESTFIRE.UNIQ.34 / SIDEGLASS



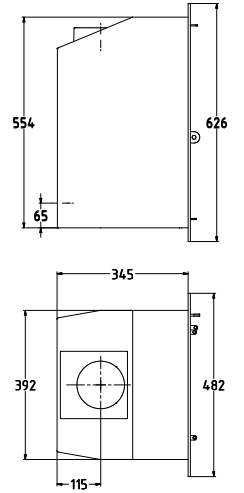
WESTFIRE.UNIQ.35 / PEDESTAL



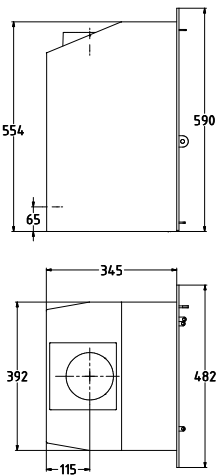
WESTFIRE.UNIQ.35 / BLOCK



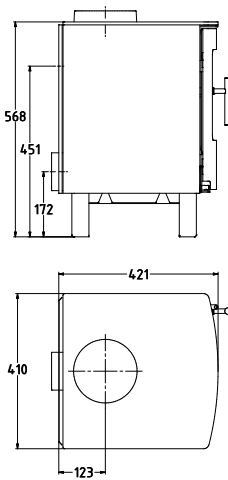
WESTFIRE.UNIQ.35 / INSERT
4-SIDES



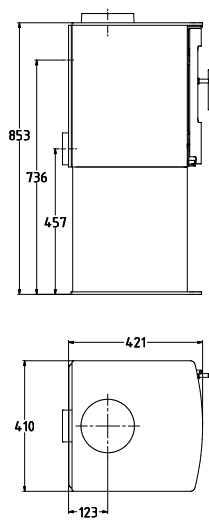
WESTFIRE.UNIQ.35 / INSERT
3-SIDES



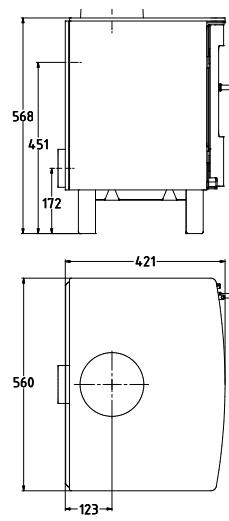
WESTFIRE.ONE



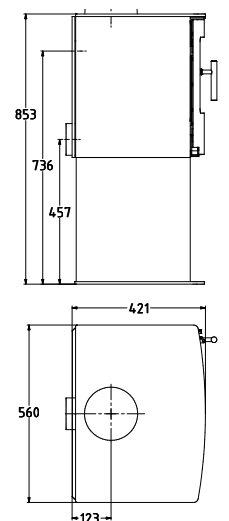
WESTFIRE.ONE / PEDESTAL

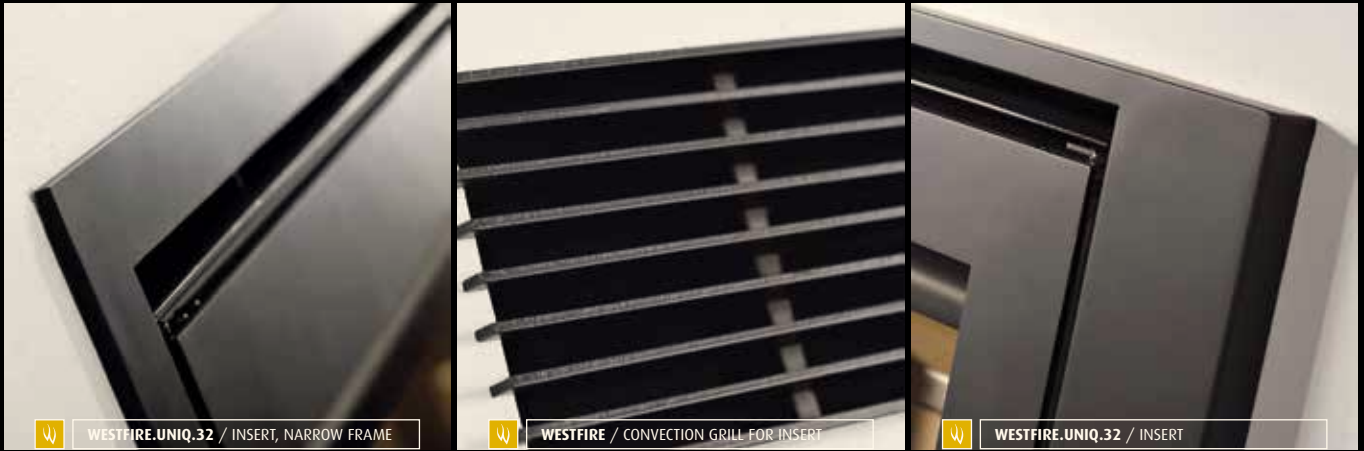


WESTFIRE.TWO



WESTFIRE.TWO / PEDESTAL





WESTFIRE.UNIQ.32 / INSERT, NARROW FRAME

WESTFIRE / CONVECTION GRILL FOR INSERT

WESTFIRE.UNIQ.32 / INSERT

QUALITY YOU CAN FEEL

All wood burning stoves from Westfire carry the CE mark. A CE/EN approval means that the stoves have been tested and approved by the Danish Technological Institute in accordance with EN 13240. The CE mark is your guarantee that the stove meets a number of stringent requirements as regards safety, the environment and fuel economy. Westfire stoves are characterised by a number of technical advantages that ensure their long durability, high heating efficiency and reliable operation.

Fuel types

Westfire stoves are accredited for burning wood and CE marked for this purpose. Although the appliances will burn other fuels Westfire do not recommend the use such fuels in our appliances.



TØMRERVEJ 3 / DK-6800 VARDE / TEL. +45 7522 5352 / FAX +45 7522 1352 / E-MAIL: INFO@WESTFIRE.DK / WWW.WESTFIRE.DK

DISTRIBUTOR



WESTFIRE 2015 8th EDITION / THE ART OF DANISH ENGINEERING / WWW.WESTFIRE.DK

UK IMPORTER: EUROSTOVE LTD / UNIT H1, MENDIP INDUSTRIAL ESTATE / ROOKSBRIDGE, AXBRIDGE, SOMERSET. BS262UG
TEL: 01934 750500 / FAX: 01173 156207 / EMAIL: INFO@EUROSTOVE.CO.UK / WWW.EUROSTOVE.CO.UK